

CTX 5800™

COMPACT CT-BASED EXPLOSIVES DETECTION



With more than 2,000 CTX explosive detection system (EDS) units deployed worldwide, we are an experienced security solution provider. From first-time EDS installations to ECAC Standard 3 conversions, we know what's needed to efficiently implement leading-edge detection solutions in any environment. Trusted by airports around the world, the CTX 5800's proven performance and small footprint make it an ideal choice for smaller airports and other critical sites. Its computed tomography (CT)-based system delivers superior 3-dimensional (3-D) imaging capabilities for quick, accurate threat detection in space- or weight-restricted environments.

BENEFITS

- Advanced threat detection in a compact design
- European Civil Aviation Conference (ECAC) Standard 3 approved
- Transportation Security Administration (TSA) certified
- Proven performance and reliability in live airport operations
- Belt speed of 0.14 m/s with throughput* of more than 400-450 BPH
- High-resolution 3-D images from a single X-ray source
- Simple installation and intuitive user interface
- Customized multiplexing solutions (MUXv2™)
- Efficient power consumption
- Unlimited bag length for out-of-gauge solutions
- Upgrade capabilities to meet future detection and capacity requirements
- Extensive support and service capabilities by a global network of field service teams

* Throughput assumes integrated environment using an average of 86 cm bags and 30 cm bag spacing.



smiths detection

Formerly Morpho Detection, a Safran Company

Advanced Detection Capabilities, Small Footprint

Since its inception, the CTX family has delivered leading automatic threat detection capabilities, with continual algorithmic improvements to meet ever-expanding threats, while continuously pushing false alarm rates to new lows.

Due to its non-intrusive size, the CTX 5800 can operate easily in most lobbies and other space-constrained environments. The ability to see over and around the CTX 5800 can help vigilant operators keep the area secure. Medium and small airports, cargo operations, government buildings and other venues can take advantage of increased security offered by CT-based detection without the need to allocate additional precious real estate.

Clarity Data Acquisition System (DAS)

Working with high-resolution 3-D images, operators get to visually “travel” throughout a bag to get a detailed view of every bag element. Clarity DAS brings together our automated EDS expertise with leading 3-D CT technology used in medical scanners. The combination of 3-D images and precise algorithmic calculations provide an increased ability to identify threats, reduce false alarm rates and lower operational costs. Since the CTX 5800 is based on the same software infrastructure as the CTX 9800 DSi™, previously trained operators can seamlessly transition to the CTX 5800 user interface and operations.

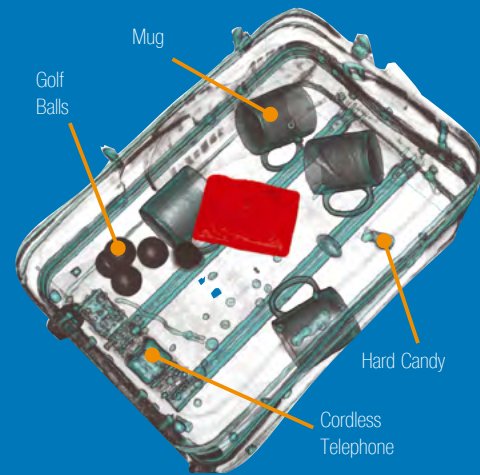
Multiplexing Solutions (MUXv2)

Multiplexing (MUXv2) refers to the software and hardware that network multiple CTX systems with User and Control Interfaces for more efficient remote screening of baggage. Scalable to your airport’s needs and designed to integrate the CTX 5800 and other CTX systems, MUXv2 provides efficient image distribution among operators and allows information to be stored in a central location. Along with redundancy of key network components to reduce points of failure and maximize system reliability, MUXv2 helps increase security and lower operational costs – while optimizing the use of your critical personnel.

BHS Integration

We’ve been integrating our EDS equipment with BHS partners for more than fifteen years and have experience with all the BHS providers. With simple extensions, the CTX 5800 can handle everything from large duffel bags to skis and golf bags. The CTX 5800 supports fully integrated solutions with its ability to communicate with your baggage handling/conveying system through various communication protocols.

CTX 5800 image of bulk explosive



Dynamic screening allows the CTX system to change inspection modes automatically on a bag-by-bag basis through commands from the BHS. It also enables inspection options to be adjusted based on security and operational needs or the demands of future screening protocols.

Services and Support

We believe in extending the lifecycle of your investment as long as possible. With support for more than 2,000 CTX EDS worldwide, including maintenance services at 90% of the world’s top 20 airports, we know what works in every type of environment. Our leading-edge service offerings include predictive analytics, remote monitoring and integrated system diagnostics to better ensure system uptime and availability.

Our commitment: provide implementation support and ongoing service to help you be successful. We offer customized EDS modeling services and project support along with pre-implementation design layout and deployment. Flexible support programs and operator training are also available to optimize product performance and ensure a smooth transition to new or upgraded systems, while a twenty-four hour Customer Assistance Center provides access to an integrated response program and qualified technical support personnel.

Visit morphodetection.com or connect with one of our EDS specialists at info@morphodetection.com to discover more about the benefits an experienced security provider delivers.

Smiths Detection

Tel: +1 510 739 2400 Fax: + 510 739 6400 www.morphodetection.com
Headquarters: 7151 Gateway Boulevard, Newark, CA 94560 USA

smiths detection

Formerly Morpho Detection, a Safran Company